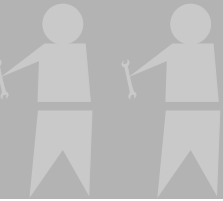


Sorti Q base mounting instructions / Sorti Prospektkarussell Montageanleitung

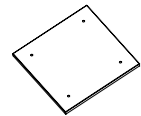
assembling requires 2 people /
Montage erfordert 2 Personen



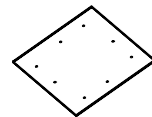
Accessories /Zubehör



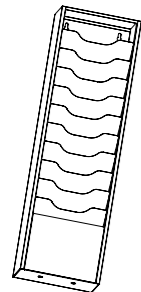
1 pc



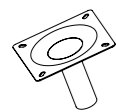
1 pc



1 pc



4 pcs



1 pc

Small parts / Kleinteile



12 pcs



4 pcs



1 pc



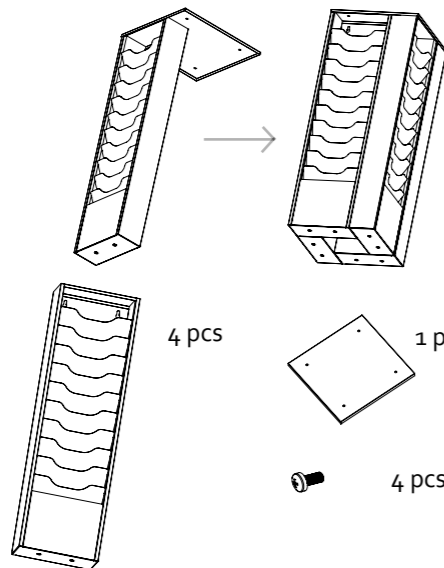
1 pc

1
EN
Attach 4 sorti slim pieces to the top plate using screws.

EN

DE
Schrauben Sie die vier Prospekthalter mit der Deckelplatte zusammen.

DE

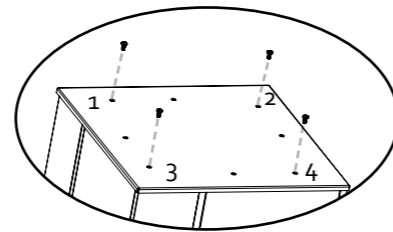


2
With help from a second person turn the sorti slim upside down.

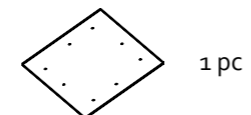
Attach the bottom plate onto the other end of the sorti slim using screws at holes 1-4, pictured below. Careful not to scratch the sorti slim or the plates.

Stellen Sie die so zusammengeschaubten Prospekthalter zu zweit auf die in Schritt 1 befestigte Deckelplatte. Vermeiden Sie Kratzer indem Sie einen Teppich oder Karton unterlegen.

Befestigen Sie die Bodenplatte wie abgebildet.



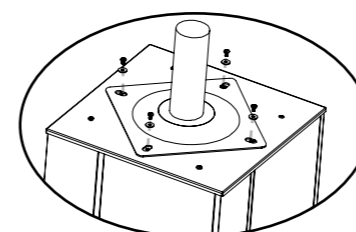
4 pcs



1 pc

3
Attach the sorti swivel to the base plate through the remaining 4 holes using the screws and washers.

Befestigen Sie den Drehsockel wie abgebildet mit 4 Schrauben und Beilagscheiben.



4 pcs

4 pcs



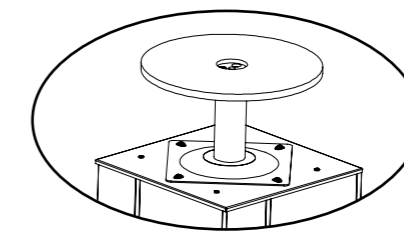
1 pc

4
Attach the Q base to the base using the screw.

Use the tool to tighten the screw completely.

Careful heavy base!

Befestigen Sie den Standfuß am Drehsockel wie abgebildet.



1 pc

1 pc



1 pc

5
With help from the second person, flip the sorti into the upright position.

Stellen Sie das nun fertige Prospektkarussell zu zweit auf den Sockel.

